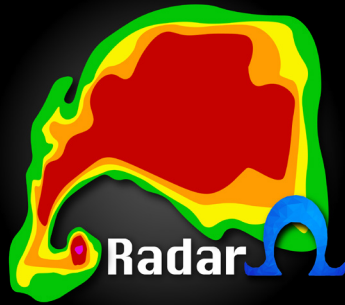


RadarOmega Official User Guide

Side Menu

Pages 3 - 13

Prevent Timeout	3
Center GPS	3
Map Types	3
METARS Settings	4
Display Settings	5-6
<i>Opacity</i>	5
<i>State/County Borders</i>	6
<i>Enable Map Rotation</i>	7
<i>Storm Tracks</i>	7-8
<i>Animation Speed</i>	8
<i>Time Settings</i>	8
Warning Settings	9
Spotter Network	9
Storm Reports	10
Severe Outlooks	11
Tropical Outlooks	12
Lightning Detections	12
NEXRAD History	12-13
Storm Mapping Viewer	*TBD*



RadarOmega Official User Guide

Top Menu Page 14-15

Access to Side Menu	14
Current Radar Selected	14
Volume Coverage Pattern	15
Radar Products Menu	15
<i>(This is where you access Reflectivity, Velocity, Correlation Coefficient, etc.)</i>	
Current Time of Displayed Radar Image	15

Bottom Menu Page 16-20

Radar Frames	16
Animation Slider	17
Radar Towers	17-18
Geolocation (GPS) Tool	18-19
Drawing Tool	19
Sharing Tool	20
Data Viewer Tool	20

Side Menu

-  Radar
- Prevent Timeout
- Center GPS
- Map Types
- METARS Settings
- Display Settings
- Warning Settings
- Spotter Network
- Storm Reports
- Severe Outlooks
- Tropical Outlooks
- Lightning Detection
- NEXRAD History
- Storm Mapping Viewer



Welcome to the side menu! You can access this within your app by selecting the three bars.

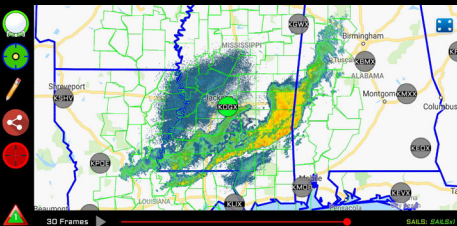
The first option you see is **Prevent Timeout**, right now it is turned off. By turning this option on, your screen will keep RadarOmega open and won't shut off until you either turn the screen off or exit the app. This is a really nice feature to use when you have Center GPS turned on while driving.

Center GPS when turned on will show you exactly where you are on the map, and will follow you with your GPS centered. This is useful when driving to see where you are in relation to storms.

Map Types

There are 5 different map types to choose from.

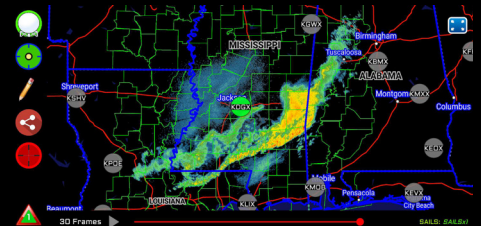
Standard



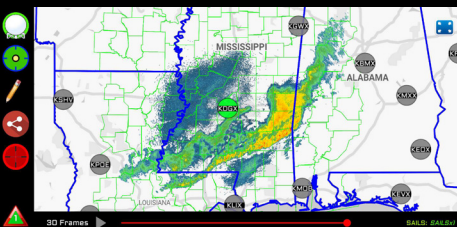
Map Types

- Standard
- Grey
- Black County
- Road Map
- Satellite

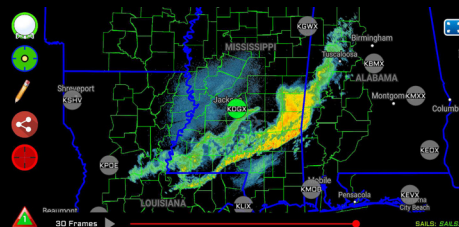
Road Map



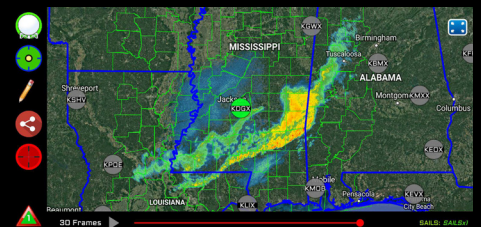
Grey



Black County



Satellite



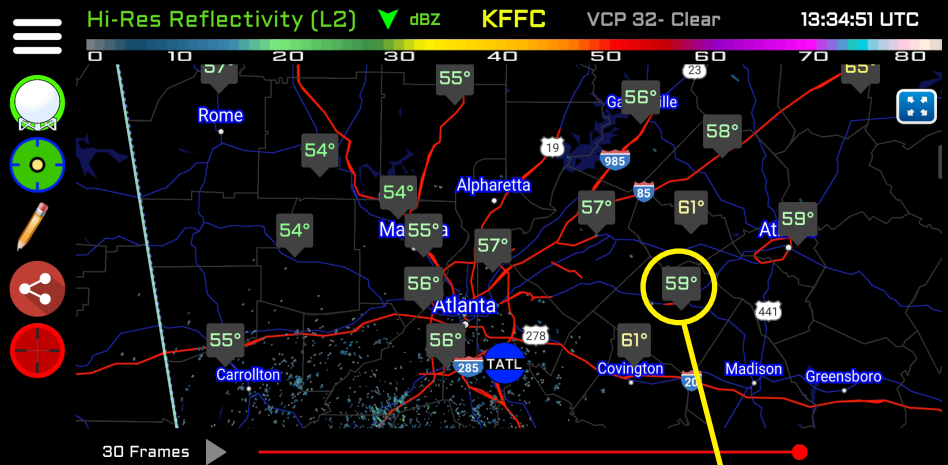
METARS Settings

Within the METAR settings, there are 5 different options to display on the map: Temperature, Dewpoint, Wind Direction, Wind Speed, and Visibility. You can only display one at once.

METARS Display Settings

Use the controls below to set the primary METARS display on the map

- Temperature(F)
- Dewpoint(F)
- Wind Direction
- Wind Speed(MPH)
- Visibility(MILES)



Station ID
KLZU

Last Update: 2019-05-14 12:56:00

Notable Weather:

57°F Dewpoint: 48°F
Altimeter 30.01(inHg)
Visibility: 10 Miles

METAR RAW TEXT:
KLZU 141256Z VRB04KT 10SM CLR 14/09 A3001 RMK
AO2 SLP170 T01390089

Sky Conditions
-Sky Cover: CLR --- Cloud Base: 0 (ft agl)

Flight Category: VFR

5 MPH
0 MPH GUST

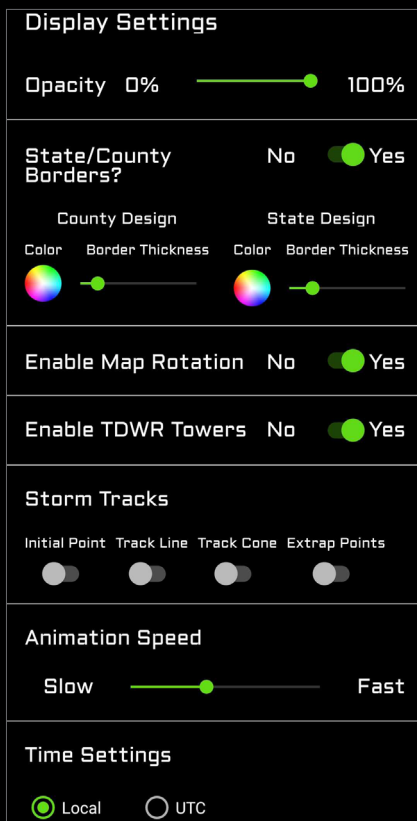
When you click on a **METAR icon**, this menu will come up showcasing the completely decoded raw METAR as well as the raw METAR itself. You will also see the last time that the METAR has been updated near the top.

Down near the bottom of this menu you will see the wind data, with the wind direction, wind speed, and the wind gust.

Sometimes there will look like there is data that is out of place, like a 30 degree in an 80 degree environment. This only has to do with the actual ASOS station malfunction, not us. We just display the information it is reporting.

Display Settings

In the display settings, there are many different options! This is where you will find the option to change the opacity, remove state/county borders, enable map rotation (for landscape or portrait viewing), animation speed, and the option to change the time settings.

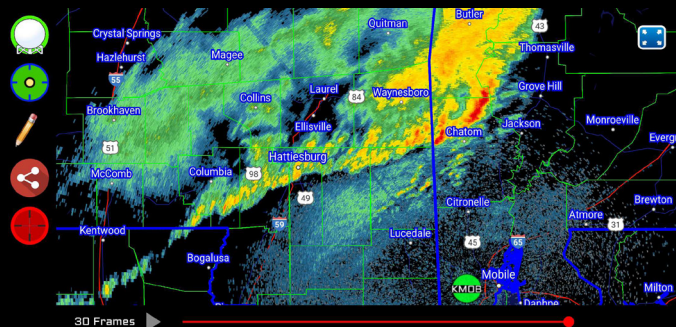


Opacity

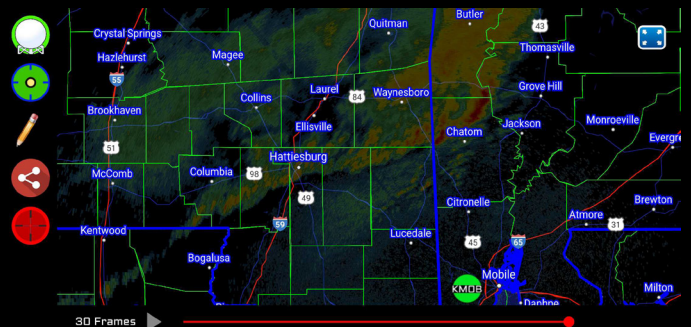
When the slider is at 100%, the radar image will be completely opaque. The closer the slider moves to 0%, the more transparent the image will get.

Some users have accidentally moved the slider to 0% making it seem like none of the radars are working. Try making sure yours is at 100% if you are having issues!

Opacity at 100%



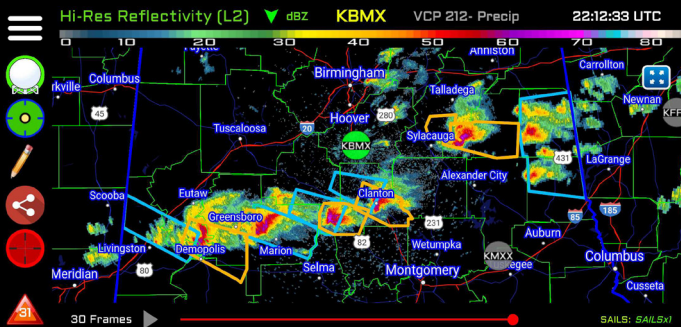
Opacity at 20%



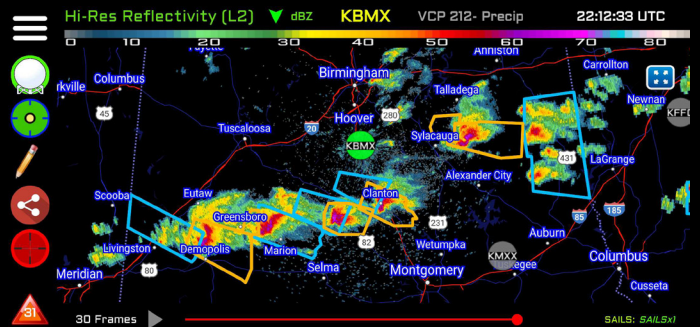
State/County Borders

Here you can turn off and on the state/county border overlay. You can also adjust the color of the county and state borders, as well as the thickness. Just click on the color wheel to adjust color and opacity, and on the slider to adjust the thickness of the borders.

State/County Borders: ON



State/County Borders: OFF



State/County Borders?

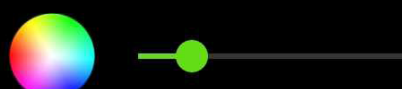
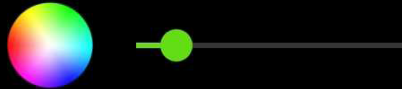
No Yes

County Design

State Design

Color Border Thickness

Color Border Thickness

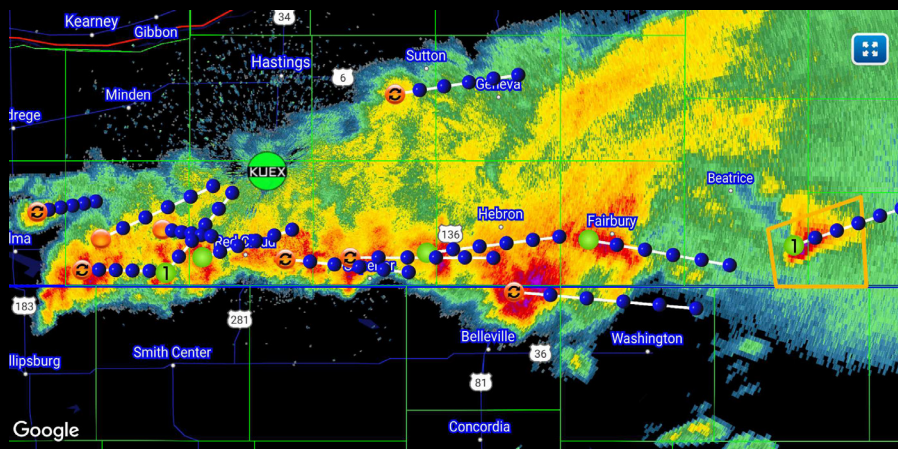


Enable Map Rotation

By turning this option on, this will allow your phone to be able to view the radar in either portrait mode or in landscape mode. When turned off, your phone will just remain in portrait mode.

Storm Tracks

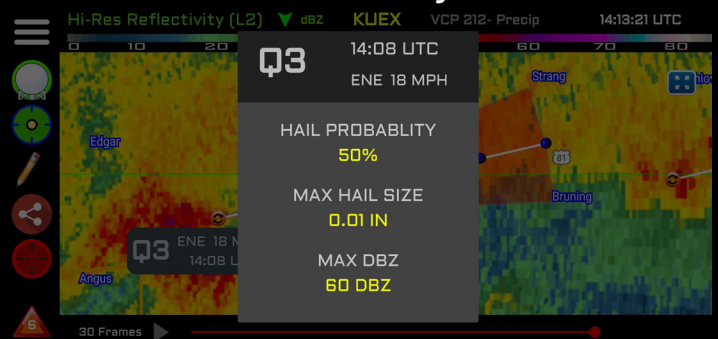
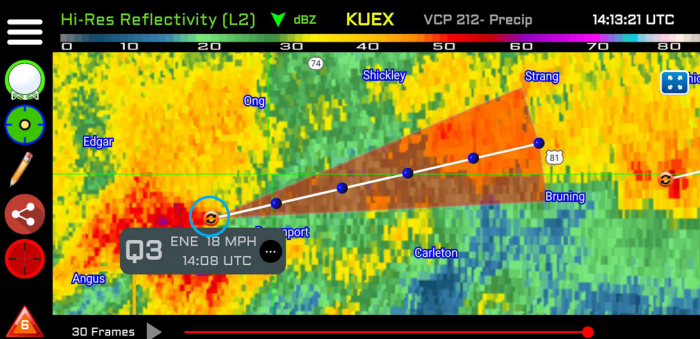
Storm Tracks can be used to get a general feel for where storms are headed.



Storm Tracks offer 4 different options to have on or off. These options are: initial point, track line, track cone, and extrap.

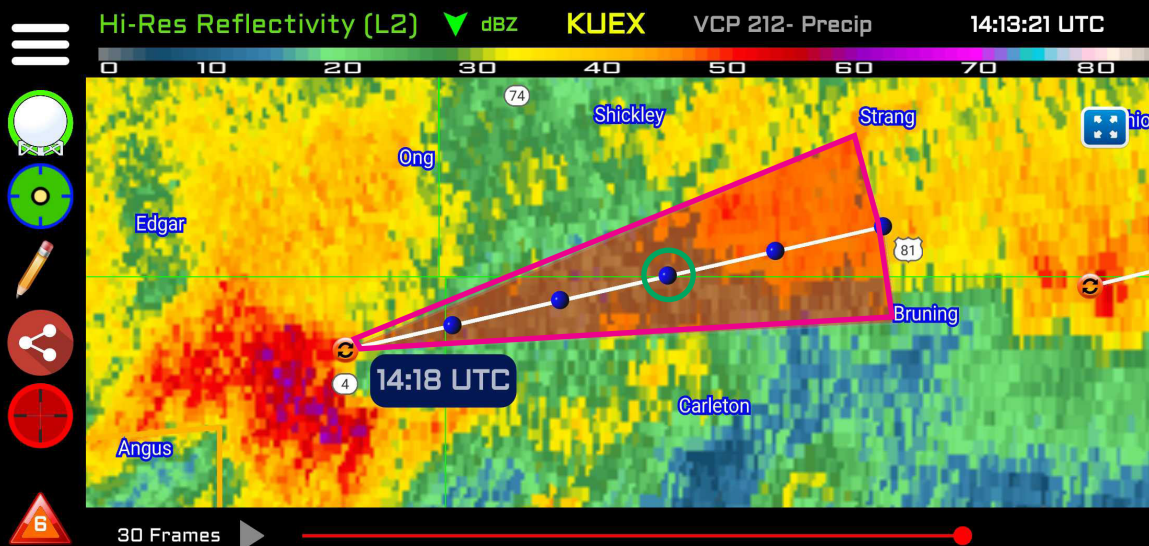
This is the **initial point**. When you click this it will show what cell number it is (Q3), the time, and direction it is moving.

To have this menu show up, click the three dots (**...**) in the previous image. This will show the approximated hail probability, estimated hail size, and the max reflectivity DBZ.



Storm Tracks (cont.)

The white line is the track line, the red shading is the **track cone**, and the blue dots are the **extrap. (extrapolation) points**. The track line is the average of likely possible locations of where the cell will move. The **track cone** shows the general area of where the storm has possibility of going. When you click on the **extrap. points**, each one will show an estimated time of where the cell will be.



Animation Speed

This is where you can change how quickly or how slow your radar will advance when you have it being animated, as well as when you export into a GIF within the app.

Time Settings

Here you can change your time preference, whether in UTC (Zulu/Greenwich Mean Time) or in your local time. You'll mainly see this reflected in the top right-hand corner of the app.

Warning Settings

This is where you can decide which warnings you would like to see. Typically, we keep all of the warnings on at all times, but the option to turn individual ones off or on is really nice when there is a severe weather event with many tornado warnings and severe thunderstorm warnings.

Warning off/on options

- Severe T-Storm
- Tornado
- Flash Flood
- Special Marine
- Special Weather

Spotter Network

This option allows you to see who all has been active in the Spotter Network for the following times:

- Active the last 5 minutes
- Active the last 15 minutes
- Active the last 30 minutes
- Active for 60 minutes or more

Spotter Network

- Active last 5 minutes
- Active last 15 minutes
- Active last 30 minutes
- Active 60 minutes +



Users will then populate the map, and by clicking on the dots, you'll see their information that they have provided to Spotter Network. For privacy reasons, we have not included this in our user guide.

Storm Reports

Storm Report Settings

Report Options

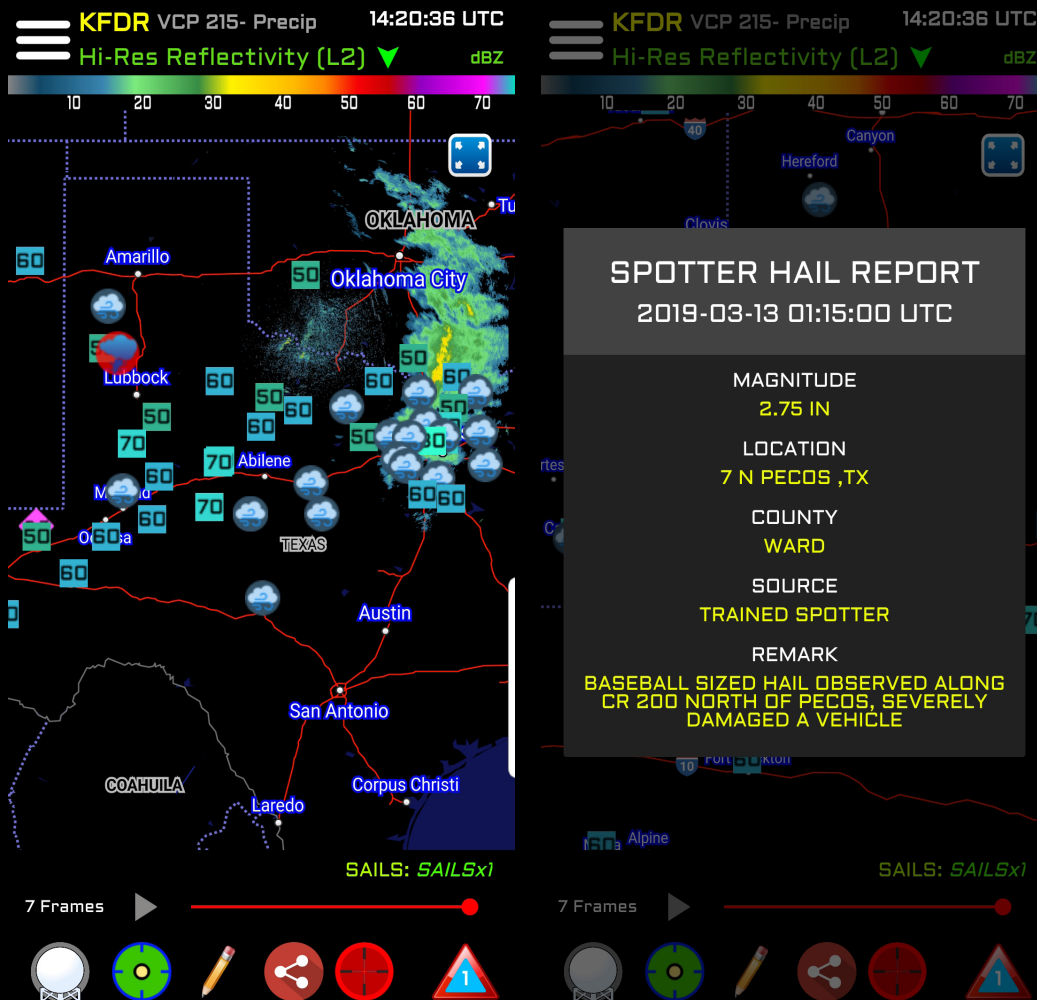
- Tornado
- Wind Damage
- Recorded Wind
- Hail

Time Interval Options

- 30 Minutes
- 1 Hour
- 3 Hours
- 6 Hours
- 12 Hours
- 24 Hours

Use this option to see storm reports for at the most 24 hours. These reports include tornado reports, wind damage reports, recorded wind speed reports, and hail reports.

The time intervals options also allows you too see how far back you'd like to see up to 24 hours. If you'd like to search a specific date and time period, use the Storm Mapping Viewer.

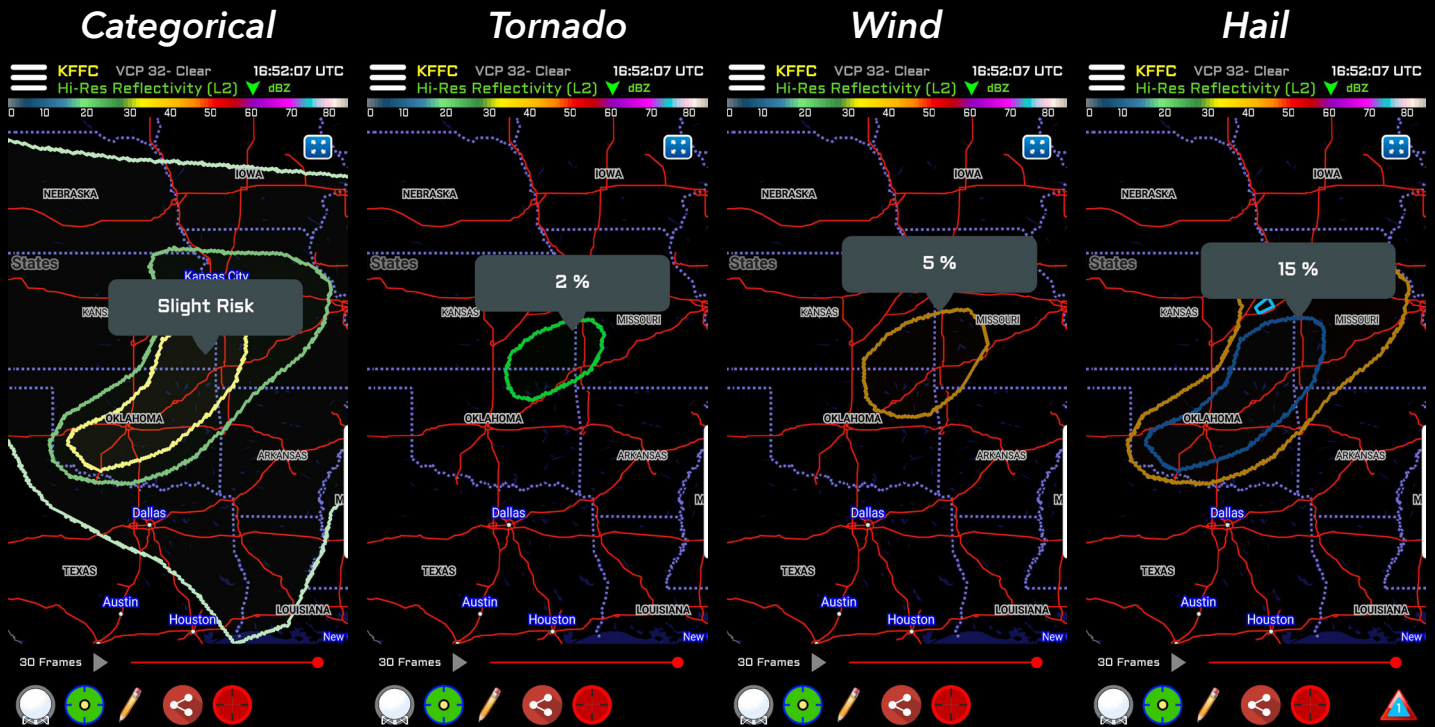


Severe Outlooks

This option in the side menu is to view the Storm Prediction Center (SPC) severe weather outlooks! We show the Day 1 Outlooks. This is including the categorical outlook, tornado, wind, and hail outlook that they also provide on their website. Only one option can be turned on at once. We also provide the categorical Day 2 and the categorical Day 3. To remove from your map, just return to this menu and make sure all options are off.

Day 1 Outlook

- Categorical
- Tornado
- Wind
- Hail
- Categorical Day 2
- Categorical Day 3



Tropical Outlooks

We will update this part of the user guide closer to tropical season, which begins June 1st, 2019 and lasts until November 1st, 2019.

Lightning Detection

Lightning Detection

Select Strike Interval

1 Minute

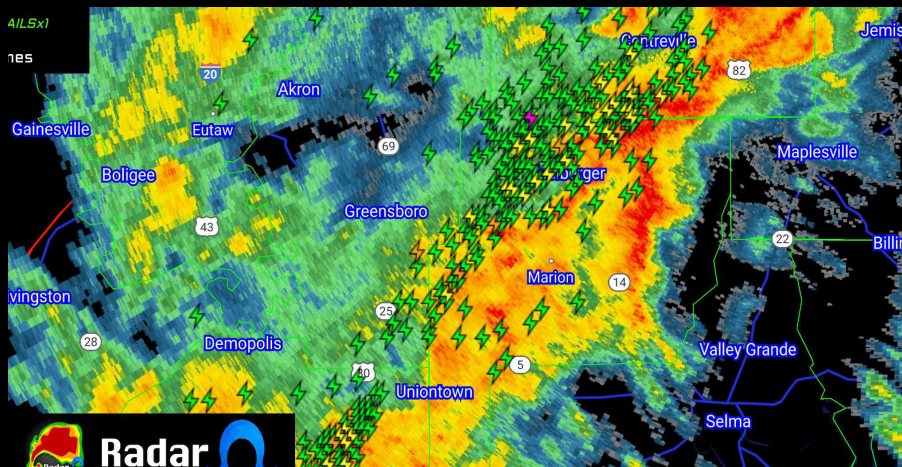
5 Minute

15 Minute

30 Minute

Lightning Detection is where you can see the lightning density for a certain time interval. More strikes in 1 minute mean a fairly active storm.

We will be updating this section with more detailed information soon.



NEXRAD History

Perhaps one of the most powerful tools in the restoration industry, in conjunction with the Storm Mapping Viewer. This allows you to view the radar detected hail over the last 24 hours. The NEXRAD Attribute History Setting is great to use during a suspected hail event. This tool is great to use WITH reports because you can easily estimate the extent of the hail path. Use 1.00"+ to see the likely start to finish of a hail path, or 3.00"+ to really nail down possibilities of areas with extreme hail.

NEXRAD Attribute History Settings

Type Selection

1.00"+ Hail

2.00"+ Hail

3.00"+ Hail

Interval Options

30 Minutes

1 Hour

3 Hours

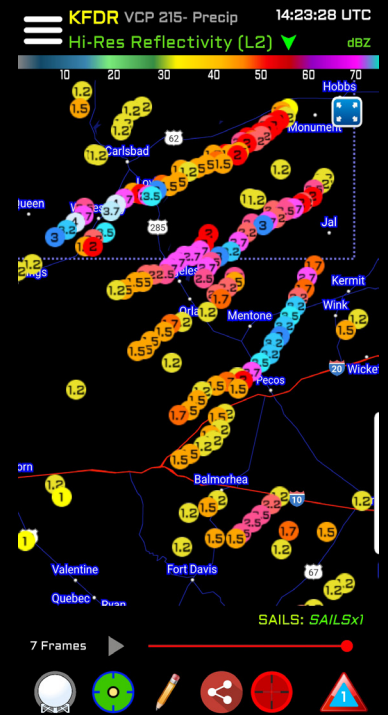
6 Hours

12 Hours

24 Hours

*NOTE: It is VERY important to remember this is **RADAR ESTIMATED**. Because of this, there are normal radar biases.

Including, the further away from the radar the less accurate the reading is. Just because it says 4.00" does not necessarily mean this is true. Use this tool with caution.*



Top Menu

Welcome to the top menu! Here you will find access to the side menu, access to the radar products, current radar selected, the current radar volume coverage patterns (VCP), and the current time of the displayed radar image.



Access To The Side Menu

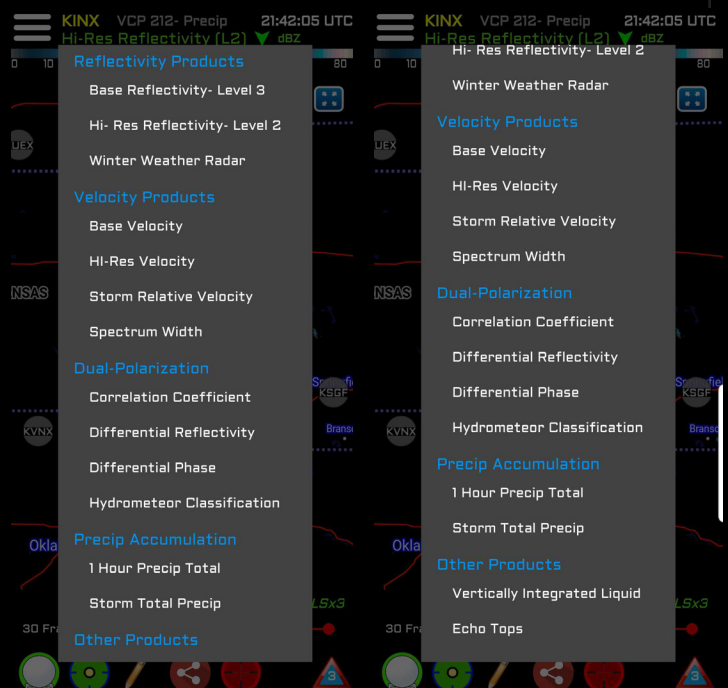
Hit the three bars (≡) that are on the left side of the top menu. That's how you'll see all the lovely features on pages 3-8.

Current Radar Selected

This is the current radar you have selected (**KINX**), and the images that will be showing on your map will be from this radar.

Radar Products Menu

Click on this green text (**Hi-Res Reflectivity (L2) ▼ dBZ**) to access all those wonderful radar products you got this app for in the first place! In this menu you can access all of our current Level 2, Level 3, and Dual-Pol products. We're looking forward to adding on to this guide with a "how to use _____ product" in the next month.



Volume Coverage Patterns (VCP)

This is showing the current VCP state of the radar (**VCP 212- Precip**). There are seven VCP patterns. Clear Air or Light precipitation (VCP 31, 32, and 35), Shallow Precipitation (VCP 35 and 215), Non-Tropical Convection (VCP 12, 212, and 215), and Tropical System Convection (VCP 212, 215, and 121). The only ones that have SAILS available are VCP 12, 212, 215, and 35. We will detail this more in our Detailed Radar

Current Time of Displayed Radar Image

This is current time stamp of each radar image (**20:51:44 UTC**). As the image is animated it will change. You can also change this to your current time zone rather than UTC in the Display Settings (page 5).

Bottom Menu

Welcome to the bottom menu! This menu is where you'll find most of your radar controls, GPS controls, the drawing pen, sharable GIF/Screenshots, the data viewer tool, and access to the warning dashboard. Below is what the bottom menu looks like.

SAILS: SAILSx1

7 Frames

Split Mode

Data Viewer

Location Modes

Draw

Share Snapshot

Tower Selection Mode

SAILS: SAILSx1

7 Frames

10 Frames

14 Frames

18 Frames

22 Frames

26 Frames

30 Frames

75 Frames

150 Frames

250 Frames

7 Frames

Radar Frames

Click the (+) to see the expanded bottom menu!


When you first open RadarOmega, it may default to 7 frames, but just click on the text and it will pop up with this menu. Here you'll have the option to choose from 7 up to 30 frames for when you animate the radar image. This amount of frames comes with the base app, but up to 250 frames can be had with an Alpha subscription.


Animation Slider




When you click on the play button this will animate the radar image with the frames. You can also use the animation slider to animate the frames manually. Do this by using the slider to scroll through images. Just make sure your frames are set to as many as you would like to see!

Radar Towers

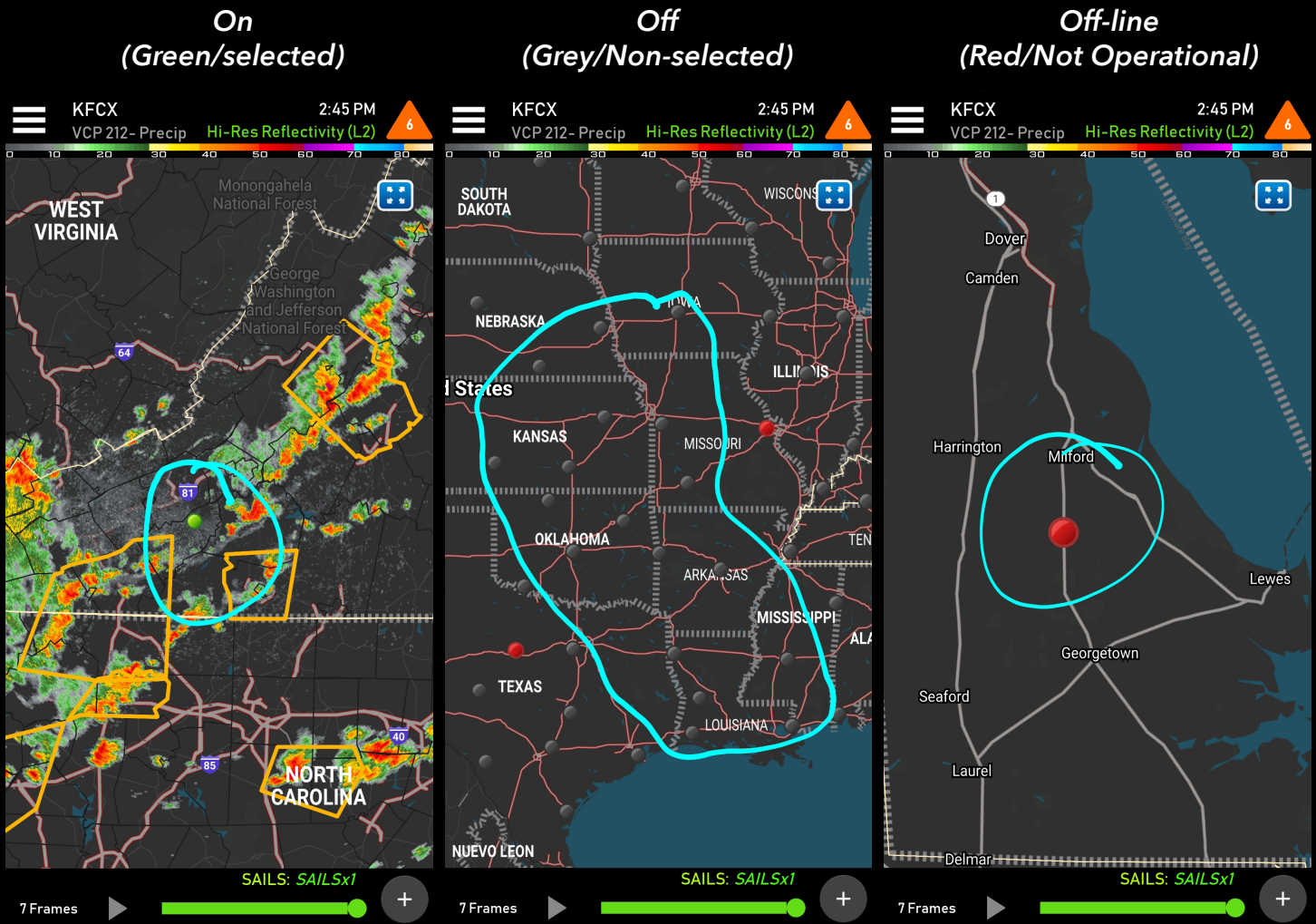
At first, this button  will default to look like this. This is just showing you that all the radar towers are showing and on to whichever one you have selected (or closest to your GPS location).

Now if you tap on the radar towers icon again, it will show this auto button . What this will do is auto detect to whichever radar you have your map near. When you move along the map, the radar towers will be automatically selected and show the radar image for that tower.




The last option that will show  is where the radar tower markers will be turned off. This way they don't get in the way of radar images that you'd like to see.

Radar Towers (cont.)

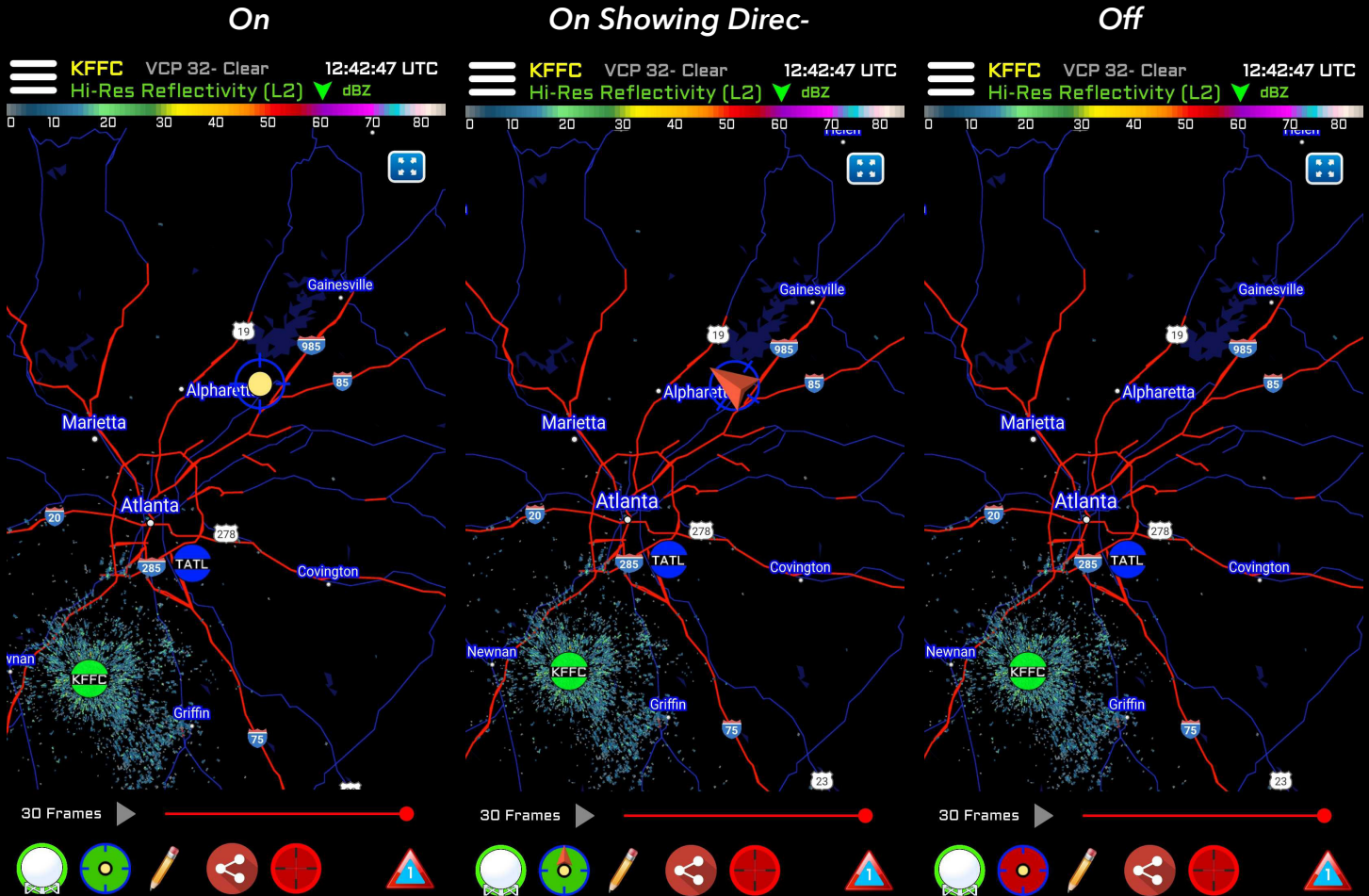
Here's what it looks like when the towers are on (selected), off, or off-line.





Geolocation (GPS) Tool

By activating this button , your screen will snap to your current location as well as activate the closest radar tower to your GPS location. Next by tapping that button again, this will show the direction you're facing . This is useful to see which direction storms are going if you're looking at the sky! The last option for the geolocation tool is off. You'll be able to tell if it is off if the button looks like this .

Geolocation (GPS) Tool (cont.)



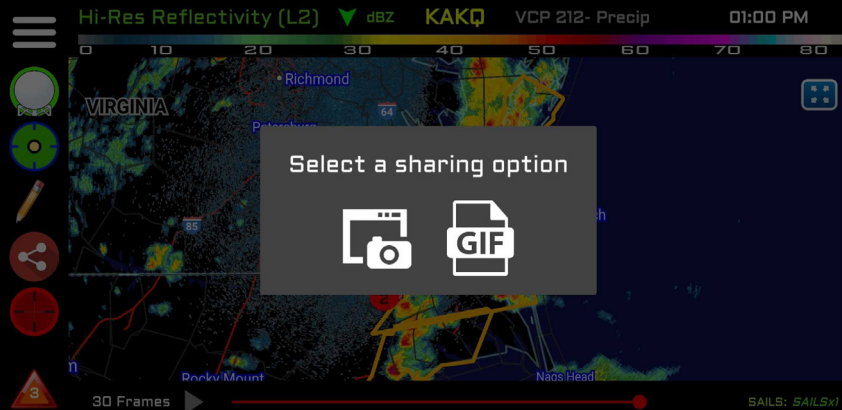
Drawing Tool

This is the drawing tool  ! When activated, the button will be red  . You can draw anywhere on the map. Yay!





Sharing Option

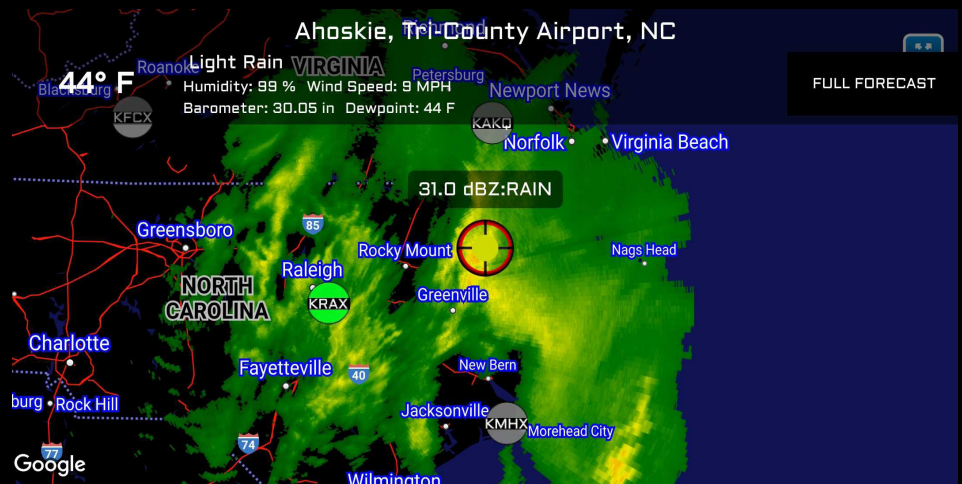
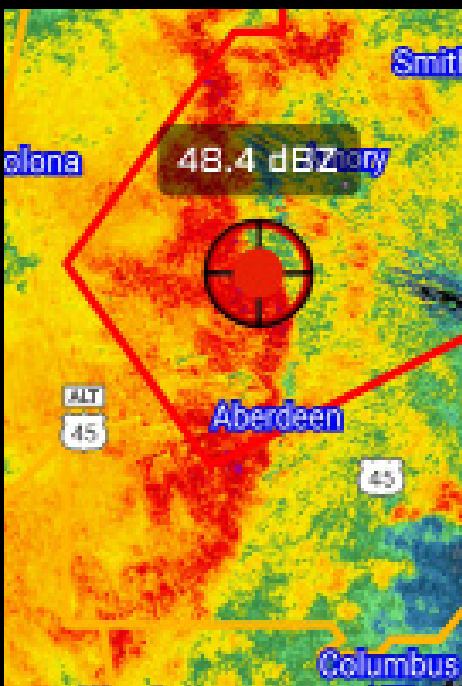
Click this  to screenshot or export a GIF of 7 frames to the world!



Data Viewer Tool

This  is a great tool to use when you want to know the exact value of certain data. This tool can be used on whichever radar product you would like to use it for.

If you click the data viewer tool a second time, it will come up with this icon . This allows you to see the current conditions of wherever you have the data viewer tool hovering over. To see the full forecast for that location, select the "full forecast" button in the top right of the current conditions.



Enhanced Data Viewer

Welcome to our newest installment of data, the Enhanced Data Viewer. This includes the three subscription packages, Alpha, Beta, and Gamma.

Alpha	Beta	Gamma
<ul style="list-style-type: none">- 250 Frames of Animation for: Single Site Radar Data, Hi-Resolution Satellite Data, & MRMS Data- Model Data for: HRRR, NAM3KM, NAM12KM, & RAP<ul style="list-style-type: none">- Hi-Resolution Satellite Data- MRMS (Multi Region - Multi Sensor): Maximum Expected Hail data, Rotation Tracks data, & National Reflectivity data<ul style="list-style-type: none">- Dual View Display- Custom Location Dashboard & Display- Tropical Spaghetti Models- Live Hurricane Hunter Data Overlay	<ul style="list-style-type: none">- 150 Frames of Animation for: Single Site Radar Data, Hi-Resolution Satellite Data, & MRMS Data<ul style="list-style-type: none">- Hi-Resolution Satellite Data- MRMS (Multi Region - Multi Sensor): Maximum Expected Hail data, Rotation Tracks data, & National Reflectivity data<ul style="list-style-type: none">- Dual View Display- Custom Location Dashboard & Display- Tropical Spaghetti Models- Live Hurricane Hunter Data Overlay	<ul style="list-style-type: none">- 75 Frames of Animation for: Single Site Radar Data, & Hi-Resolution Satellite Data<ul style="list-style-type: none">- Hi-Resolution Satellite Data- Dual View Display- Custom Location Dashboard & Display- Tropical Spaghetti Models- Live Hurricane Hunter Data Overlay
\$11.99 / \$119.00 monthly / yearly	\$8.99 / \$89.00 monthly / yearly	\$4.99 / \$49.00 monthly / yearly

Each subscription comes with desktop access with all the features that you see above. To login to the desktop access you will have to visit this link:

<https://www.radaromega.com/>

Select either MacOS or Windows and you're on your way to using RadarOmega on the desktop! Enjoy!

Accessing Enhanced Data Tools

In order to access the Enhanced Data Features, you will have to select the words **"Get More Data"** at the top of the side menu.



Get More Data

Alpha Extended Data Options

Enhanced Data Viewer

Storm Mapping Archive

Custom Location Dashboard

Outlooks

Severe Weather Outlook

Tropical Weather Outlook

Toolkit

METARS Settings

Warning Settings

Spotter Network

Storm Reports

Lightning Detection

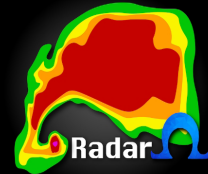
NEXRAD History

Then you will see this screen that will show you the options that you can upgrade to.

*In order to purchase a subscription, you **MUST** first create an account with RadarOmega.*

My Subscriptions

Alpha	\$11.99/MO	\$119/YR	i
Beta	\$8.99/MO	\$89/YR	i
Gamma	\$4.99/MO	\$49/YR	i



In order to take full advantage of RadarOmega premium content across your devices please create an account or Sign In to your existing account.

CREATE ACCOUNT

EXISTING USER? SIGN IN

Create Account

Complete the information below to create your RadarOmega account

Email Address

Password

Re-enter Password

CREATE ACCOUNT

Once you click the **"Create Account"** button, you'll be prompted with this short form asking you to enter in an email address and password.

This login information is what you will use to access the desktop app that is associated with the subscription level you chose!

Getting Started With Your Subscription

So now you've purchased either an Alpha, Beta, or Gamma subscription, thank you! Let's get started on showing you around with the enhanced data tools. We'll be using Alpha in this guide to show the best examples for how to navigate the app.

Enhanced Data Viewer

Access to the Single Site Radar, Satellite, Models, & MRMS

The screenshot shows a weather radar interface with several callouts:

- Settings:** A gear icon is labeled "Access to the settings (adjust map type, playback speed, etc.)".
- Product Selection:** A dropdown menu is labeled "SINGLE SITE RADAR" with a downward arrow.
- Date/Time:** A text box shows "2019-08-21 15:24:22" and is labeled "Shows date/time for Single Site Radar".
- Map Tools:** A blue button labeled "Map Tools" with a downward arrow is labeled "Access to the map tools".
- Map Interaction:** A blue square with four arrows is labeled "Shows date/time for Single Site Radar".
- Subscription Levels:** A text box lists "Gamma: 75", "Beta: 150", and "Alpha: 250" and is labeled "Access frames here.". A line points from this box to the "7 Frames" dropdown.
- Radar Product:** A dropdown menu is labeled "Reflectivity - L2" and is labeled "Access radar products here, like reflectivity, velocity, etc.". A line points from this box to the "Reflectivity - L2" dropdown.
- Playback:** A blue "Play" button and a scroll bar are labeled "Hit play, or use the scroll bar to animate all of the products included in the subscriptions.".

Hit play, or use the scroll bar to animate all of the products included in the subscriptions.